

د افغانستان اسلامي امارت

د امارتی شرکتونو لوی ریاست
د افغان تیلی کام مخابراتی امارتی شرکت لوی ریاست
د مالی او اداری معاونیت
د تدارکاتو ریاست
د پیرو دلو آمریت
د تخنیکي او اجناسو پیرو دلو مدیریت

(موضوع: تهیه و تدارک 10 پایه ماشین OTDR برای تطبیق پروژه FTTH در زونهای ولایات)

{97}

شماره درخواست نرخدهی:

{1447/1/12}

تاریخ صدور درخواست نرخدهی به قمری:

{1404/4/17}

تاریخ صدور درخواست نرخدهی به شمسی:

جنس فوق ضرورت : معاونیت عملیاتی سیمدار (مدیریت عمومی حفظ و مراقبت فکس لاین زونهای ولایات)

تاریخ ترتیب استعلام: (12 / 1 / 1447)

- (1) اداره {نام اداره تدارکاتی را درج کنید} تخصیص بودجه لازم برای تدارک اجناس/ خدمات غیر مشورتی مندرج این درخواست را دارد.
- (2) آفر سربسته شما الی {تاریخ و وقت را درج کنید} یا قبل از آن به دفتر {مدیریت خریداری امریت تهیه و تدارکات شرکت افغان تیلیکام} تسلیم داده شود.
- (3) آفر ها نیکه بعد از میعاد تسلیمی ارائه گردند، بدون اینکه باز شود مسترد می گردد. پاکت حاوی آفر باید به صورت واضح عبارت نرخ برای {نام اجناس/ خدمات غیر مشورتی را درج کنید} نشانی شده باشد.
- (4) آفر ارائه شده در آفرها باید الی مدت (30) روز تقویمی سر از تاریخ ختم میعاد تسلیمی آفرها اعتبار داشته باشد.
- (5) در صورت تغییر در مقدار نیازمندی، اداره می تواند مقدار نیازمندی تقاضا شده را الی (25) فیصد زیاد و یا کم نماید، مشروط به اینکه قیمت مجموعی آن از حدود صلاحیت پولی برای درخواست نرخ گیری تجاوز ننماید.
- (6) ترجیح داخلی مطابق حکم چهارم طرز العمل تدارکات قابل اجرا است. {مورد ترجیح داخلی و فیصدی آنرا درج نمائید}.
- (7) آفر گشائی در محضر عام حتمی نبوده و فرمایش دهنده مکلف به قبول نازلترین نرخ نمی باشد. در صورت رد هر یک یا تمام آفرها فرمایش دهنده کدام مسئولیت در قبال داوطلب تهیه/ارائه کننده ندارد.
- (8) آفر دهنده اسناد ذیل را با آفر خویش ضمیمه می نماید:
 - 1- جواز تجارتي/ فعاليت/ کار قابل اعتبار؛
 - 2- نمبر تشخیصیه مالیه؛
 - 3- اجازه نامه تولید کننده (در صورت لزوم).
 - 4-
- (9) سند نرخ گیری تکمیل و توسط شخص با صلاحیت یا نماینده تهیه/ ارائه کننده در هر صفحه مهر امضاء شده باشد.
نام کارمند صادر کننده درخواست نرخ گیری:

امضاء هیت

امضاء هیت

امضاء هیت

جدول اقلام و قیمت ها

شماره	اسم و تشریح با مشخصات تخنیکي اقلام	واحد	مقدار	قیمت فی واحد به افغانی	قیمت مجموعی به افغانی
1	MaxTester 720C Access OTDR (Wavelength "nm" 1310, 1550 and 1490 with 1 year warranty	پایه	10		
<p>نوت:</p> <p>✓ په هره تدارکاتي پروسه کې چې یو شرکت د اړونده نرخ اخیستنې استعمال مطابق د اجناسو، خدماتو او ساختماني چارو د تهیه او ترسره کولو لپاره ګټونکي وبلل شي او قیمت یې له (100000) سل زره افغانیو څخه لوړ وي مخکې له دې چې د پرنده کې اطلاعیه ترلاسه کړي باید له مجموعی قیمت څخه 10% لس فیصده د تضمین په ډول د افغان تیلي کام مخابراتی امارتی شرکت بانکي حساب ته جمع او اصلی اویز یې د مالی محترم ریاست له تصدیق څخه وروسته د تهیه او تدارکاتو ریاست پیروډلو آمریت ته تسلیم کړي.</p> <p>✓ که چیرته کوم ګټونکي شرکت دلس فیصده تضمین له ورکولو څخه انکار وکړي شرکت به یې د افغان تیلي کام مخابراتی امارتی شرکت په تورلیست کې ثبت کيږي او د یوکل لپاره به د افغان تیلي کام مخابراتی امارتی شرکت دخوش خرید له لاری په تدارکاتي پروسو کې ګډون نه شي کولای.</p> <p>✓ که چیرته د ګټونکي شرکت لخوا غوښتل شوی اجناس/خدمات په وخت سره تهیه او اماده نه شي یعنی شرکت ونه توانيږي چې اجناس/خدمات/ساختماني چارې تهیه او ترسره کړي دنه تهیه کولو په صورت کې به د شرکت تضمین دیوکل په پار افغان تیلي کام مخابراتی امارتی شرکت سره پاتی وي او شرکت به یې په تورلیست کې شاملیږي یوکل وروسته به یې بیرته تضمین شرکت ته سپارل کيږي.</p> <p>✓ پورته ذکرشوی پریکړی د شاروالی جواز لرونکو لپاره د تطبیق وړ نه دی.</p>					
مجموع قیمت به ارقام بشمول مالیات : عدد					
مجموع قیمت به حروف بشمول مالیات:					
مجموع مبلغ مالیات به ارقام و حروف:					
مجموع قیمت به ارقام بدون مالیات: عدد (قابل پرداخت)					
مجموع قیمت به حروف بدون مالیات (قابل پرداخت)					
مدت ضمانت (ورانتی/ گرننتی) بعد از تاریخ اكمال:					
مشخصات ضم پیشنهاد می باشد:					

مشخصات تخنیکي اجناس

شماره	اقلام	مشخصات
	<p>آدرس مشخص شرکت:</p> <p>ایمیل آدرس شرکت:</p>	

شماره	اقلام	مشخصات
	<p>اسم تهیه/ ارائه کننده:</p> <p>اسم شخص یا نماینده با صلاحیت تهیه/ ارائه کننده:</p> <p>امضای شخص یا نماینده تهیه/ ارائه کننده:</p> <p>تاریخ:</p> <p>شماره تلفون حتمی:</p>	<p>مهر تهیه/ ارائه کننده</p>

یادداشت: فرمایش گیرنده کاپی رهنمود، ساخت و مدل، بروشور و یا فهرست تجهیزات یا خدماتی را که اكمال می نماید ضمیمه نماید. معلومات فوق جهت ارزیابی مؤثر آفرها استفاده می گردد.

شرایط تدارک و پرداخت

شرایط ذیل صرف با موافقه تحریری فرمایش دهنده قابل تغییر می باشد.

- (1) تهیه کننده مکلف به پرداخت تأمینات و تضمینات می باشد، تأمینات از سر جمع پول 5 الی 15 فیصد اخذ میگردد و بعد از تکمیل و رانتهی به اکانت شرکت انتقال میگردد.
- (2) بعد از اكمال خدمات غیر مشورتی/ تهیه اجناس، تهیه/ ارائه کننده باید نسخه اصلی و (2) کاپی بل (Invoice) را به فرمایش دهنده تسلیم نماید؛
- (3) پرداخت توسط فرمایش دهنده، طی مدت (30) روز کاری درمقابل مقدار واقعی اجناس/خدمات غیر مشورتی تهیه شده صورت می گیرد.
- (4) فرمایش دهنده میتواند در حالات ذیل با ارسال اطلاعیه کتبی به تهیه/ ارائه کننده، امر خریداری را کاملاً یا قسماً فسخ نماید:
 - 1- تهیه/ ارائه کننده موفق به تحویل بخش یا تمام اجناس در ظرف مدت معینه در امر خریداری نشود؛
 - 2- تهیه/ ارائه کننده موفق به اجرای مکلفیت های دیگر تحت امر خریداری نشود.
 - 3- هرگاه در اجناس اكمال شده یا خدمات ارائه شده نواقص و یا کاستی ها مشاهده گردد، تهیه/ ارائه کننده مکلف به رفع نواقص و کاستی ها در مدت (3) روز کاری بعد از دریافت اطلاعیه در مورد می باشد، در غیر آن فرمایش دهنده می تواند امر خریداری را فسخ نماید.
 - 4- هرگاه تهیه/ ارائه کننده، در جریان داوطلبی و یا حین اجرای وظایف محوله تحت امر خریداری اقدام به فساد و تقلب نموده باشد.
 - (5) هرگاه در درخواست نرخ گیری میعاد ضمانت (وارنتی/ گرنتی) تصریح گردیده باشد، تهیه/ ارائه کننده مکلف به تعویض در طول مدت معینه می باشد.

اصلاح اشتباهات محاسبوی

- (1) اشتباهات محاسبوی طور ذیل تصحیح می گردد:

- 1- در صورت تفاوت میان مبلغ به ارقام و حروف، مبلغ به حروف قابل اعتبار می باشد؛
- 2- در صورتیکه تفاوت میان قیمت فی واحد و قیمت مجموعی وجود داشته باشد، قیمت فی واحد برای ارزیابی قیمت ها و ترتیب امر خریداری قابل اعتبار می باشد؛
- 3- در صورت موجودیت تفاوت میان نرخ فی واحد و قیمت مجموعی (حاصل ضرب مقدار در نرخ فی واحد)، نرخ فی واحد قابل اعتبار می باشد، هرگاه از نظر فرمایش دهنده اشتباه در نقاط اعشاری در قیمت فی واحد برجسته باشد، در این صورت قیمت مجموعی اقلام طوریکه نرخ داده شده است قابل اعتبار بوده و قیمت فی واحد باید اصلاح شود.
- 4- فرمایش دهنده مطابق مندرجات فوق اشتباهات محاسبوی را اصلاح و بعد از اخذ موافقه کتبی داوطلب در قیمت مجموعی آفر محاسبه می نماید.
- 5- داوطلب مکلف به پذیرش اشتباهات محاسبوی در آفر خویش می باشد. در صورت عدم پذیرش اشتباهات محاسبوی توسط داوطلب، آفر وی رد می گردد.

نوت:



MaxTester 720C Access OTDR

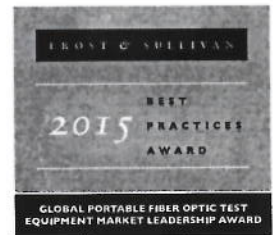
OPTIMIZED FOR MULTIMODE AND SINGLEMODE ACCESS NETWORK CONSTRUCTION AND TROUBLESHOOTING



iOLM
READY

EF
READY

EXFO Connect
Compatible



NEW OTDR
GENERATION

Fully featured, entry-level, dedicated OTDR with tablet-inspired design; perfect for construction, troubleshooting and everyday field testing in any access network.

SPEC SHEET

KEY FEATURES

Handy, lightweight, powerful, tablet-inspired design

7-inch, outdoor-enhanced touchscreen—the biggest in the handheld industry

12-hour autonomy

Dynamic range of up to 36 dB in singlemode and 29 dB in multimode

Live fiber testing at 1625 nm

iOLM-ready: intelligent and dynamic application that turns complex OTDR trace analysis into a one-touch task

Rugged design built for the outside plant

APPLICATIONS

Access network construction and troubleshooting

FTTx/PON testing through splitters (up to 1x32)

Central office link certification

Data center and private networks

LAN/WAN characterization

Fronthaul/backhaul (FTTA, FTTT, RRH, DAS and small cells)

COMPLEMENTARY PRODUCTS AND OPTIONS



Fiber Inspector Probe
FIP-400B (WiFi or USB)

FastReporter

Data Post-Processing Software
FastReporter



Soft Pulse Suppressor Bag
SPSB

Accor
ofa

EXFO

THE HANDHELD OTDR... REINVENTED.

The MaxTester 700B/C Series is the first tablet-inspired OTDR line that is handy, lightweight and rugged enough for any outside plant environment. With a 7-inch, outdoor-enhanced touchscreen—the most efficient handheld display in the industry—it delivers an unprecedented user experience. Its intuitive Windows-like GUI ensures a fast learning curve. Plus, its new and improved OTDR 2 environment offers icon-based functions, instant boot-up, automatic macrobend finders as well as improved auto and real-time modes.

The MaxTester 700B/C Series is a line of genuine high-performance OTDRs from the world's leading manufacturer. It delivers EXFO's tried and true OTDR quality and accuracy along with the best optical performance for right-first-time results, every time.

The amazing 12-hour battery life will never let a technician down, and the plug-and-play hardware options, like the VFL, power meter and USB tools, make every technician's job easier.

Most importantly, the MaxTester 700B/C Series is finally bringing the intelligent Optical Link Mapper (iOLM), an intelligent OTDR-based application, to the handheld market. This advanced software turns even the most complex trace analysis into a simple, one-touch task.

Ultimately, the MaxTester 700B/C Series is small enough to fit in your hand and big enough to fit all your needs!

THE ENTRY-LEVEL SOLUTION DESIGNED FOR ALL YOUR TESTING NEEDS

The MaxTester 720C OTDR/iOLM features a dynamic range of 36 dB in singlemode and 29 dB in multimode, as well as industry-leading dead zones. This ensures efficient testing of closely spaced events such as patchcords in data centers, or patch panels in central offices (COs). The MaxTester 720C is optimized for point-to-point (P2P) testing of any access network, and is suitable for testing through 1x32 splitters.

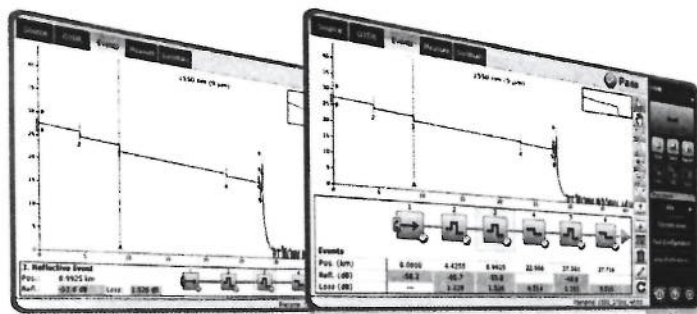
Other models available:

- › MaxTester 715B short access and FTTx last-mile installation and troubleshooting
- › MaxTester 730C FTTH/PON installation and maintenance for testing through optical splitters and P2P metro

LOOKING FOR ICON-BASED MAPPING?

Linear View (Included on All EXFO OTDRs)

Available on our OTDRs since 2006, the linear view simplifies the reading of an OTDR trace by displaying icons in a linear way for each wavelength. This view converts the graph data points obtained from a traditional single pulse trace into reflective, non-reflective or splitter icons. With applied pass/fail thresholds, it becomes easier to pinpoint faults on your link.



This improved version of linear view provides the flexibility to display both the OTDR graph and its linear view without having to toggle to analyze your fiber link.

Although this linear view simplifies the OTDR reading of a single pulse width's trace, the user will still need to set the OTDR parameters. In addition, multiple traces must often be performed in order to fully characterize the fiber links. See the section below to learn how the iOLM can perform this automatically and with more accurate results.

EXFO

iOLM—REMOVING THE COMPLEXITY FROM OTDR TESTING

OTDR TESTING COMES
WITH ITS LOAD OF
CHALLENGES. . .



WRONG
OTDR TRACES



COUNTLESS TRACES
TO ANALYSE



REPEATING THE
SAME JOB TWICE



COMPLEX INSTRUMENT
TRAINING/SUPPORT

iOLM | Intelligent Optical
Link Mapper

In response to these challenges, EXFO developed a better way to test fiber optics:

The iOLM is an OTDR-based application designed to simplify OTDR testing by eliminating the need to configure parameters, and/or analyze and interpret multiple complex OTDR traces. Its advanced algorithms dynamically define the testing parameters, as well as the number of acquisitions that best fit the network under test. By correlating multipulse widths on multiple wavelengths, the iOLM locates and identifies faults with maximum resolution—all at the push of a single button.

HOW DOES IT WORK?

Dynamic
multipulse
acquisition



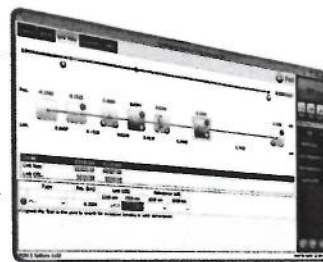
Intelligent
trace analysis



All results
combined into a
single link view



Comprehensive
diagnosis



Turning traditional OTDR testing into clear, automated, first-time-right results for technicians of any skill level.

Patent protection applies to the iOLM, including its proprietary measurement software. EXFO's Universal Interface is protected by US patent 6,612,750.

THREE WAYS TO BENEFIT FROM THE iOLM

COMBO



Run both iOLM and OTDR applications (Oi code)

UPGRADE



Add the iOLM software option to your
iOLM-ready unit, even while in the field

iOLM ONLY



Order a unit with the iOLM
application only

iOLM FEATURES VALUE PACK

In addition to the standard iOLM feature set, you can select added-value features as part of the **Advanced** package or standalone options. Please refer to the iOLM specification sheet for the complete and most recent description of these value packs.

GET THE BEST OUT OF YOUR DATA POST-PROCESSING

FastReporter

ONE SOFTWARE DOES IT ALL

This powerful reporting software is the perfect complement to your OTDR, and can be used to create and customize reports to fully address your needs.

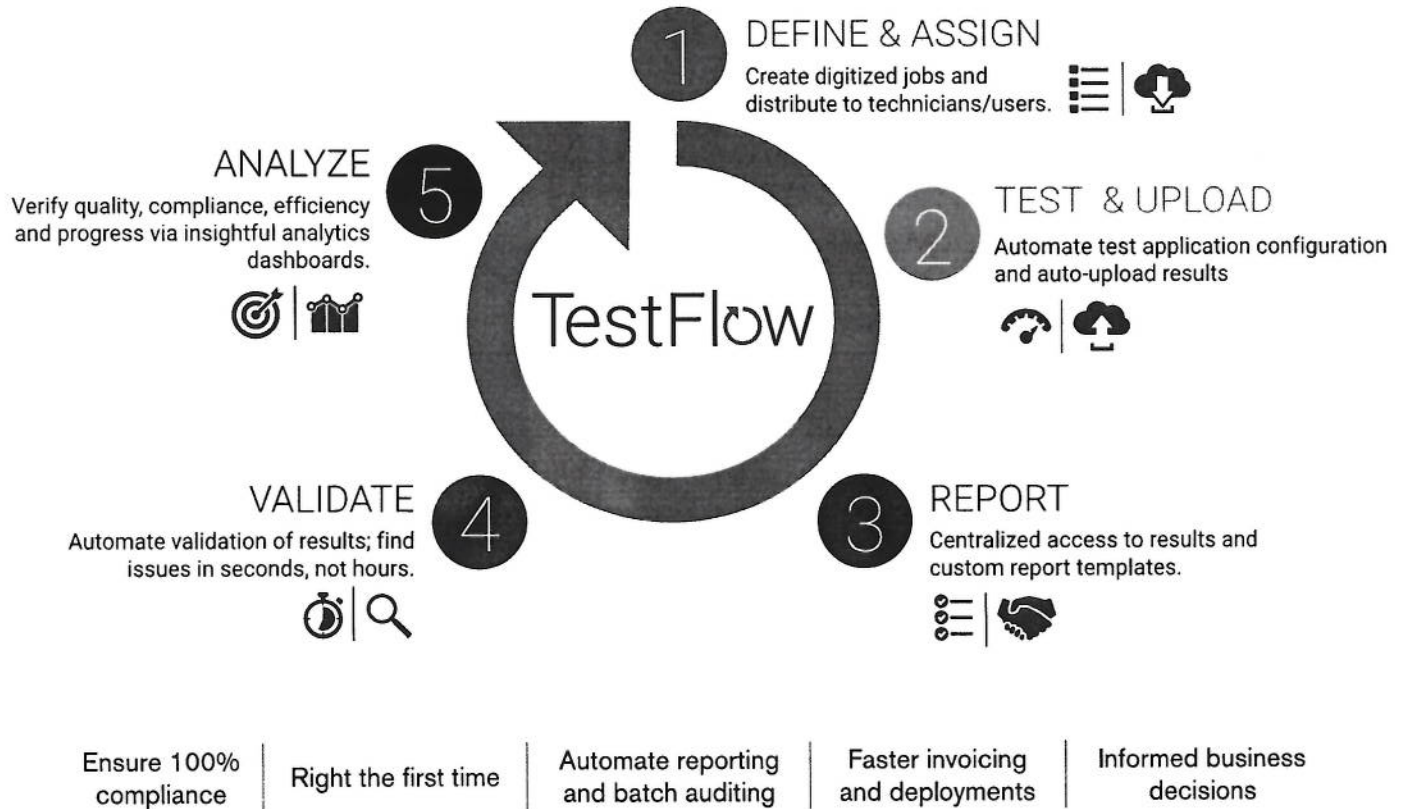


EXFO

GET MORE FROM FastReporter WITH TestFlow

TestFlowCLOUD-BASED FIELD
TEST MANAGEMENT**90-DAY
FREE TRIAL****THE TestFlow PROCESS**

Whether you are a field technician, a site lead or a project manager, you can benefit from TestFlow.

Get your free trial today or for more info: www.EXFO.com/TestFlow**EXFO**

TROUBLESHOOTING HIGH-SPEED MULTIMODE NETWORKS WITH ENCIRCLED FLUX

EF READY

EF launch fiber
(SPSB-EF-C30)

Whether for expanding enterprise-class businesses or large-volume data centers, new high-speed data networks built with multimode fibers are running under tighter tolerances than ever before. In the event of failure, intelligent and accurate test tools are needed to quickly find and fix the fault.

Multimode fibers are the trickiest links to test, because the test results are highly dependent on each device's output conditions. Troubleshooting with a unit other than the construction unit may mislead the technician or result in the inability to find the fault, creating longer network downtimes.

For multimode fibers, EXFO recommends using an external launch mode conditioner that is Encircled Flux (EF)-compliant. The EF standard (as recommended in TIA-568 via TIA-526-14-B and IEC 61280-4-1 Ed. 2.0) is a way of controlling the source launch conditions so that tier-2 troubleshooting can be performed with maximum accuracy and consistency.

QUAD OPTION FOR MULTIMODE UNITS

The multimode units offer maximum flexibility by featuring a unique quad-ready ability.

Upgrading to the quad option is easy and instantaneous, thanks to a software key that activates the singlemode wavelengths. Singlemode wavelengths are pre-calibrated at the factory, so you are ready to test singlemode fibers right after the upgrade with no other constraints. This will save you both time and money.



OPTICAL PLUG-AND-PLAY OPTIONS

The MaxTester features plug-and-play optical options that can be purchased whenever you need them: at the time of your order or later on. In either case, installation is a snap, and can be performed by the user without the need for any software update.

Optical Power Meter

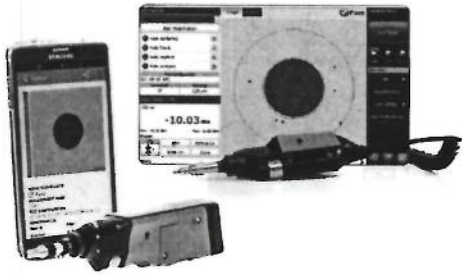
A high-level power meter (GeX) that can measure up to 27 dBm, the highest in the industry. This is essential for hybrid fiber-coaxial (HFC) networks or high-power signals. If used with an auto-lambda/auto-switching compatible light source, the power meter automatically synchronizes on the same wavelength, thus avoiding any risk of mismatched measurement.

- › Extensive range of connectors
- › Auto-lambda and auto-switching
- › Offers measurement storage and reporting
- › Seven standard calibrated wavelengths

Visual Fault Locator (VFL)

The plug-and-play VFL easily identifies breaks, bends, faulty connectors and splices, in addition to other causes of signal loss. This basic, yet essential troubleshooting tool should be part of every field technician's toolbox. The VFL visually locates and detects faults over distances of up to 5 km by creating a bright-red glow at the exact location of the fault on singlemode or multimode fibers (available with the Optical Power Meter only).

EXFO

FIBER CONNECTOR INSPECTION AND CERTIFICATION—THE ESSENTIAL FIRST STEP BEFORE ANY OTDR TESTING

Connect_{or}Max2

Taking the time to properly inspect a fiber-optic connector using an EXFO fiber inspection probe can prevent a host of issues from arising further down the line, thus saving you time, money and trouble. Moreover, using a fully automated solution with autofocus capabilities will turn this critical inspection phase into a fast and hassle-free one-step process.

DID YOU KNOW THAT THE CONNECTOR OF YOUR OTDR/iOLM IS ALSO CRITICAL?

The presence of a dirty connector at an OTDR port or launch cable can negatively impact your test results, and even cause permanent damage during mating. Therefore, it is critical to regularly inspect these connectors to ensure that they are free of any contamination. Making inspection the first step of your OTDR best practices will maximize the performances of your OTDR and your efficiency.

FIVE MODELS TO FIT YOUR BUDGET

FEATURES	USB WIRED			WIRELESS	
	Basic FIP-410B	Semi-Automated FIP-420B	Fully Automated FIP-430B	Semi-Automated FIP-425B	Fully Automated FIP-435B
Three magnification levels	✓	✓	✓	✓	✓
Image capture	✓	✓	✓	✓	✓
Five-megapixel CMOS capturing device	✓	✓	✓	✓	✓
Automatic fiber image-centering function	X	✓	✓	✓	✓
Automatic focus adjustment	X	X	✓	X	✓
Onboard pass/fail analysis	X	✓	✓	✓	✓
Pass/fail LED indicator	X	✓	✓	✓	✓
WiFi connectivity	X	X	X	✓	✓

For additional information, please refer to the FIP-400B USB or FIP-400B wireless specification sheets.

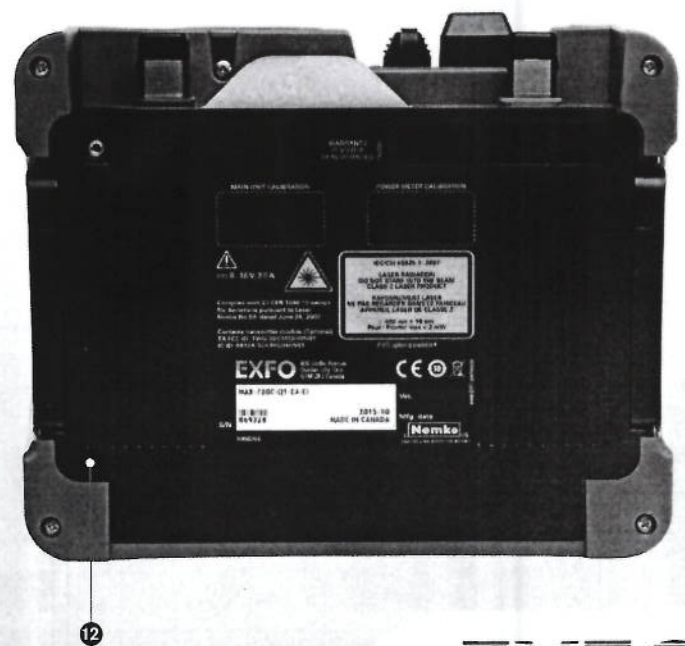
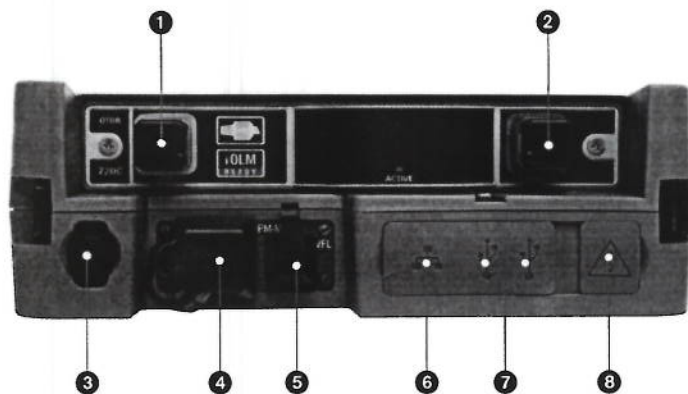
EXFO

SOFTWARE UTILITIES

Software update	Ensure that your MaxTester is up-to-date with the latest software.
VNC configuration	The Virtual Network Computing utility allows technicians to easily remote control the unit via a computer or laptop.
Microsoft Internet Explorer	Access the Web directly from your device interface.
Data mover	Transfer all your daily test results quickly and easily.
Centralized documentation	Instant access to user guides and other relevant documents.
Wallpapers	Enhance your work environment with colorful and scenic backgrounds.
PDF Reader	View your reports in PDF format.
Bluetooth file sharing	Share files between your MaxTester and any Bluetooth-enabled Windows computer.
WiFi connection	WiFi FIP inspection probe interface. Upload test results and browse the Internet.
Inspection probe	USB or WiFi probe to inspect and analyze connectors.
FTP server	Exchange files over wifi to an FTP application on a smartphone for easier file sharing from the field

PACKAGED FOR EFFICIENCY

- 1 Singlemode OTDR port
- 2 Multimode OM3/OM4 OTDR port or Live Singlemode OTDR port
- 3 Stylus
- 4 Power meter
- 5 Visual fault locator
- 6 10/100 Mbit/s Ethernet port
- 7 Two USB 2.0 ports
- 8 AC adapter
- 9 Home/switch application and screen capture (hold)
- 10 Power on/off/stand by
- 11 Battery LED status
- 12 Built-in WiFi/Bluetooth
- 13 Stand support



EXFO

Joseph
Mey

SPECIFICATIONS^a

TECHNICAL SPECIFICATIONS

Display	7-in (178-mm) outdoor-enhanced touchscreen, 800 x 480 TFT
Interfaces	Two USB 2.0 ports RJ45 LAN 10/100 Mbit/s
Storage	2 GB internal memory (20 000 OTDR traces, typical)
Batteries	Rechargeable lithium-polymer battery 12 hours of operation as per Telcordia (Bellcore) TR-NWT-001138
Power supply	Power supply AC/DC adapter, input 100-240 VAC, 50-60 Hz
Wavelength (nm) ^b	850 ± 20/1300 ± 20/1310 ± 20/1550 ± 20/1625 ± 10 ± 1490
SM live port built-in filter	1625 nm: highpass >1595 nm isolation >50 dB from 1270 nm to 1585 nm
Dynamic range (dB) ^c	27/29/36/35/35
Event dead zone (m) ^d	Singlemode: 0.7 Multimode: 0.5
Attenuation dead zone (m)	Singlemode: 3 ^e Multimode: 2.5 ^f
PON dead zone (m) ^g	35
Distance range (km)	Multimode: 0.1 to 40 Singlemode: 0.1 to 260
Pulse width (ns)	Multimode: 3 to 1000 Singlemode: 3 to 20 000
Launch conditions ^h	EF-compliant
Linearity (dB/dB)	±0.03
Loss threshold (dB)	0.01
Loss resolution (dB)	0.001
Sampling resolution (m)	Multimode: 0.04 to 5 Singlemode: 0.04 to 10
Sampling points	Up to 256 000
Distance uncertainty (m) ⁱ	±(0.75 + 0.0025 % x distance + sampling resolution)
Measurement time	User-defined
Reflectance accuracy (dB) ^b	±2
Typical real-time refresh (Hz)	4

Notes

- a. All specifications valid at 23 °C ± 2 °C with an FC/APC connector, unless otherwise specified.
b. Typical.
c. Typical dynamic range with longest pulse and three-minute averaging at SNR = 1.
d. Typical, for reflectance from -35 dB to -55 dB in singlemode and -45 dB to -30 dB in multimode, using a 3-ns pulse.
e. Typical at 1310 nm, for reflectance at -55 dB, using a 3-ns pulse. Attenuation dead zone is 4 m typical with reflectance below -45 dB.
f. Typical, for reflectance at -35 dB, using a 3-ns pulse.
g. Non-reflective FUT, non-reflective splitter, 13-dB loss, 50-ns pulse, typical value.
h. Compliant with Encircled Flux TIA-526-14-B and IEC 61280-4-1 Ed. 2.0 using an external EF conditioner (SPSB-EF-C-30).
i. Does not include uncertainty due to fiber index.

EXFO

GENERAL SPECIFICATIONS

Size (H x W x D)	166 mm x 200 mm x 68 mm (6 5/16 in x 7 7/8 in x 2 3/4 in)
Weight (with battery)	1.5 kg (3.3 lb)
Temperature	
Operating	-10 °C to 50 °C (14 °F to 122 °F)
Storage	-40 °C to 70 °C (-40 °F to 158 °F) ^a
Relative humidity	0 % to 95 % noncondensing

SOURCE

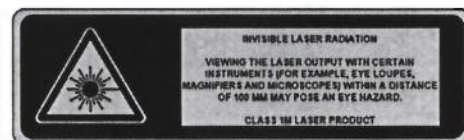
Output power (dBm) ^b	Multimode: -3 Singlemode: -6
Modulation	CW, 330 Hz, 1 kHz, 2 kHz, 1 kHz + blink, 2 kHz + blink

BUILT-IN POWER METER SPECIFICATIONS (GeX) (optional) ^c

Calibrated wavelengths (nm)	850, 1300, 1310, 1490, 1550, 1625, 1650
Power range (dBm) ^d	27 to -50
Uncertainty (%) ^e	±5 % ± 10 nW
Display resolution (dB)	0.01 = max to -40 dBm 0.1 = -40 dBm to -50 dBm
Automatic offset nulling range ^{d,f}	Max power to -30 dBm
Tone detection (Hz)	270/330/1000/2000

VISUAL FAULT LOCATOR (VFL) (optional)

Laser, 650 nm ± 10 nm
CW/Modulate 1 Hz
Typical P _{out} in 62.5/125 µm: > -1.5 dBm (0.7 mW)
Laser safety: Class 2

LASER SAFETY**ACCESSORIES (optional)**

GP-10-061	Soft carrying case	GP-2209	Spare Battery
GP-10-072	Semi-rigid carrying case	GP-2240	Utility glove
GP-10-100	Rigid carrying case	GP-2242	Replacement Hand strap
GP-1008	VFL adapter (2.50 mm to 1.25 mm)	GP-2243	Spare AC/DC adapter (Specify country power cord)
GP-2155	Carry-on size backpack	GP-3115	Kickstand
GP-2205	DC vehicle battery-charging adaptor (12 V)	SPSB-EF-C30	Encircled Flux launch cables (specify connectors)
GP-2208	Spare Stylus		

Notes

- 20 °C to 60 °C (-4 °F to 140 °F) with the battery pack.
- Typical output power is given at 1300 nm for multimode output and 1550 nm for singlemode output.
- At 23 °C ± 1 °C, 1550 nm and FC connector. With modules in idle mode. Battery operated after 20-minute warm-up.
- Typical.
- At calibration conditions.
- For ±0.05 dB, from 10 °C to 30 °C.

EXFO

ORDERING INFORMATION

MAX-720C-XX-XX-XX-XX-XX-XX-XX-XX-XX-XX-XX

Model ■
MAX-720C = OTDR

Optical configuration ■
SM1 = SM OTDR, 1310/1550 nm
SM2 = SM OTDR, 1310/1550 nm and 1625 nm live^a
Q1 = MM OTDR, 850/1300 nm, QUAD-ready^{a, b}
Q1-QUAD = QUAD OTDR, 850/1300 nm and 1310/1550 nm^{a, b}

Base software ■
OTDR = Enables OTDR application only
iOLM = Enables iOLM application only
Oi = Enables OTDR and iOLM applications

Singlemode and multimode connector ■
EA-EUI-28 = APC/DIN 47256
EA-EUI-89 = APC/FC narrow key
EA-EUI-91 = APC/SC
EA-EUI-95 = APC/E-2000
EA-EUI-98 = APC/LC
EI-EUI-28 = UPC/DIN 47256
EI-EUI-89 = UPC/FC narrow key
EI-EUI-90 = UPC/ST
EI-EUI-91 = UPC/SC
EI-EUI-95 = UPC/E-2000
EI-EUI-98 = UPC/LC
EI connectors = See section on next page

iOLM software option ■
00 = iOLM Standard
ADV = iOLM Advanced
iLOOP = iOLM loopback mode
iCERT = iOLM tier-2 certification

Power meter ■
00 = Without power meter
VFL = Visual fault locator (650 nm)
PM2X = Power meter; GeX detector
VPM2X = VFL and power meter; GeX detector

Power meter connector adapter ■
FOA-22 = FC/PC, FC/SPC, FC/UPC, FC/APC
FOA-32 = ST: ST/PC, ST/SPC, ST/UPC
FOA-54B = SC: SC/PC, SC/SPC, SC/UPC, SC/APC
FOA-96B = E-2000/APC
FOA-98 = LC
FOA-99 = MU

FastReporter software
00 = Without software option
FR2 = FastReporter 2 software

WiFi and Bluetooth
00 = Without RF components
RF = With RF capability (WiFi and Bluetooth)^{a, i}

Extra FIP-400B tips^l
Bulkhead tips
FIPT-400-LC = LC tip for bulkhead adapters
FIPT-400-LC-APC = LC/APC tip for bulkhead adapter
FIPT-400-SC-APC = SC APC tip for bulkhead adapter^h
FIPT-400-SC-UPC = SC UPC tip for bulkhead adapter

Patchcord tips
FIPT-400-U12M = Universal patchcord tip for 1.25 mm ferrules
FIPT-400-U12MA = Universal patchcord tip for 1.25 mm ferrules APC
FIPT-400-U25M = Universal patchcord tip for 2.5 mm ferrules^g
FIPT-400-U25MA = Universal patchcord tip for 2.5 mm ferrules APC^h

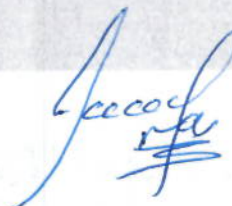
Base Tips^l
APC = Includes FIPT-400-U25MA and FIPT-400-SC-APC
UPC = Includes FIPT-400-U25M and FIPT-400-FC-SC

Inspection probe model^h
00 = Without inspection probe
FP410B = Digital video inspection probe
Triple magnification
FP420B = Analysis digital video inspection probe
Automated pass/fail analysis
Triple magnification
Autocentering
FP425B = Wireless digital video inspection probe^l
Automated pass/fail analysis
Triple magnification
Autocentering
FP430B = Automated analysis digital video inspection probe
Automated focus
Automated pass/fail analysis
Triple magnification
Autocentering
FP435B = Wireless analysis digital video inspection probe^l
Automated focus
Automated pass/fail analysis
Triple magnification
Autocentering

Example: MAX-720C-Q1-QUAD-Oi-EA-EUI-98-iCERT-VPM2X-FOA-98-FP430B-UPC-FR2

Notes

- The two ports are configured with the same adapter type.
- Multimode connector port will be supplied in UPC.
- Please refer to the intelligent iOLM specification sheet for the complete and most recent description of these value packs.
- Only available if power meter option is selected. Additional connector adapters available, contact EXFO.
- Not available in China.
- This list represents a selection of fiber inspection tips that covers the most common connectors and applications but does not reflect all the tips available. EXFO offers a wide range of inspection tips, bulkhead adaptors and kits to cover many more connector types and different applications. Please contact your local EXFO sales representative or visit www.EXFO.com/FIPtips for more information.
- Included when UPC base tips are selected.
- Included when APC base tips are selected.
- Includes a bulkhead adapter for patch cord inspection.
- Available if inspection probe is selected.
- Includes ConnectorMax2 software.
- RF option is mandatory and automatically included if FP425B or FP435B fiber inspection probe model is selected.
- Multimode connectors available in EI (UPC) only.

EI CONNECTORS

To maximize the performance of your OTDR, EXFO recommends using APC connectors on singlemode port. These connectors generate lower reflectance, which is a critical parameter that affects performance, particularly in dead zones. APC connectors provide better performance than UPC connectors, thereby improving testing efficiency.

For best results, APC connectors are mandatory with the iOLM application.

Note: UPC connectors are also available. Simply replace EA-XX by EI-XX in the ordering part number. Additional connector available: EI-EUI-90 (UPC/ST).

EXFO Headquarters > Tel.: +1 418 683-0211 | Toll-free: +1 800 663-3936 (USA and Canada) | Fax: +1 418 683-2170 | info@EXFO.com | www.EXFO.com

EXFO serves over 2000 customers in more than 100 countries. To find your local office contact details, please go to www.EXFO.com/contact.

EXFO is certified ISO 9001 and attests to the quality of these products. EXFO has made every effort to ensure that the information contained in this specification sheet is accurate. However, we accept no responsibility for any errors or omissions, and we reserve the right to modify design, characteristics and products at any time without obligation. Units of measurement in this document conform to SI standards and practices. In addition, all of EXFO's manufactured products are compliant with the European Union's WEEE directive. For more information, please visit www.EXFO.com/recycle. Contact EXFO for prices and availability or to obtain the phone number of your local EXFO distributor.

For the most recent version of this spec sheet, please go to the EXFO website at www.EXFO.com/specs.

In case of discrepancy, the Web version takes precedence over any printed literature.

Keep this document for future reference.

A handwritten signature in blue ink, appearing to read "J. Gauthier" or similar, with a stylized flourish at the end.